



KEYWORDS
TECHNOLOGIES



Authorized
Training
Centre

Tekla®

We Unlock Your Designing Skills

Tekla?

Tekla Structures is the most constructible structural software for BIM. With it, you can create, combine, manage and share accurate multi-material 3D models full of construction information.

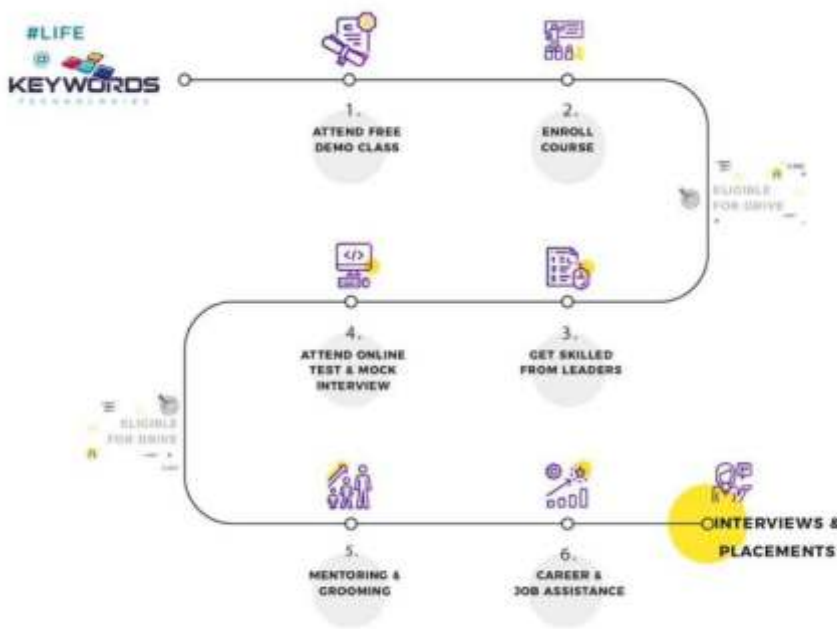
You can use Tekla Structures for design, detailing and information management from conceptual planning to fabrication and construction on site.

About US

KEYWORDS TECHNOLOGIES is a TRIMBLE TEKLA Authorised training centre in Kochi. Our institute is formed and developed for students and co-operates as a key to unlock their upcoming ambitious and passionate world. We help students to emerge daily with updated techniques and requirements of up to date company requirements. KEYWORDS TECHNOLOGIES creates a bridge between students and faculties for their career growth and set a bright future for the next level professionals. We provide exposure with Learning, up skilling knowledge with lab facility, training, Project assistance and career opportunities.



Steps to build the career in Keywords Technologies



Why choose us

1. Well equipped lab
2. Experienced Faculties
3. 100% placement Support
4. Project oriented training
5. internationally accreted
6. Video tutorials for getting started

Tekla Software Is Ideal For,

1. Steel Detailers & Fabricators
2. Bridge Engineers
3. Concrete Contractors
4. Structural Engineers
5. Precast Detailers & Producers
6. Rebar Detailers
7. Engineering Students
8. BIM Modelers
9. Estimators

Common Construction Industries and areas used **TEKLA SOFTWARE**

1. Steel Industry

- Industrial & Commercial Building Constructions
- Bridges • Offshore Structures • Tanks & Vessels
- Pre-Engineered Buildings • Air Hangers
- Roof Structures • Power Plants
- Transmission Towers • Conveyors
- Building Information • Modelling

2. Concrete Industry

- Precast Building Construction
- Rebar Detailing & Schedules
- Rebar Placing & Coordination
- Formwork Design & Modelling
- Pour Estimate & Plan
- Building Information Modelling

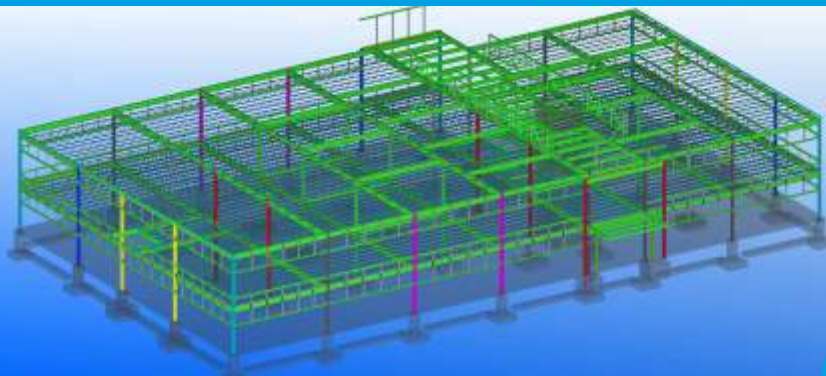
Qualifications for resuming TEKLA Courses

- ITI Civil Draftsman
- Diploma in Civil / Mechanical Engineering
- BE / BTech in Civil / Mechanical Engineering

COURSES

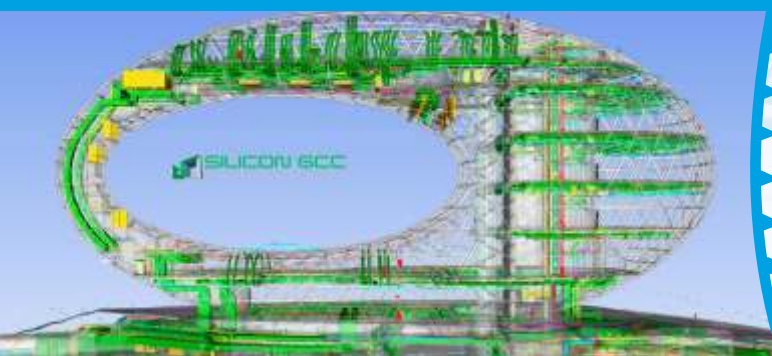
CRASH COURSE

- Tekla Structures Introduction
- New Project Creation
- Working with Views
- 3d Modelling of basic structural elements
- Connection detailing with system components
- Drawing types in Tekla Structures
- Basic numbering in Tekla Structures
- Basic drawing list handling
- Creating fabrication drawings
- Basic drawing editing



- Concepts of steel Detailing & Modelling
- Understating client Drawings
- Introduction to Tekla Structures
- Creation of a New Project
- Project property handling
- Grid creation
- View properties and Setup
- Work plane setup
- Preparation of 3D Model
- Attributes
- Components and it's functionality
- Manage selection and view Filter
- Numbering
- Reports
- Drawings in Tekla structures
- Drawing Properties
- Assembly Drawing creation and arrangement
- Single Part Drawing creation and arrangement
- Erection Drawings creation and arrangement
- Drawing Editing
- Drawing Printing and Exporting
- Final Assignment - Practice Project Execution & Submission (Level-1)

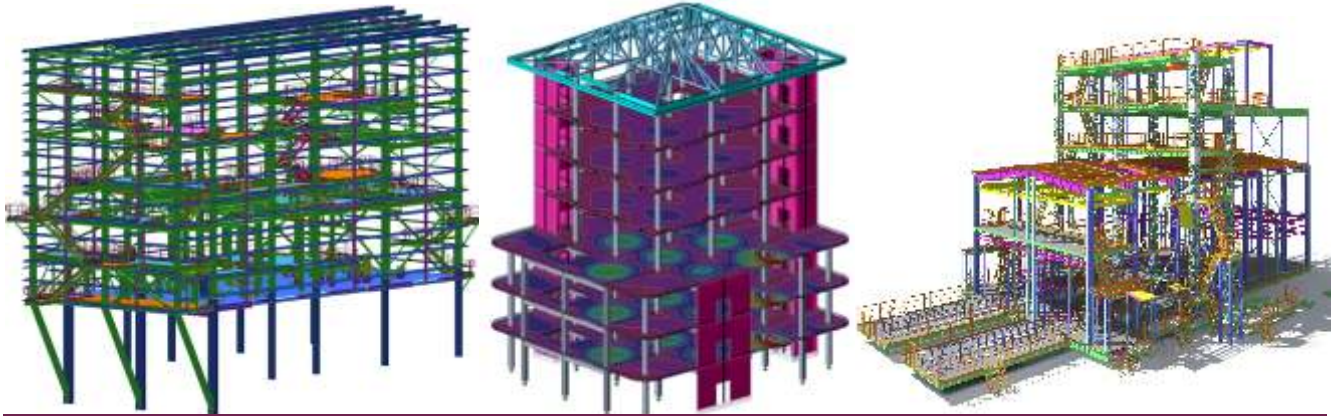
Basics of TEKLA STRUCTURES, STEEL DETAILING & MODELLING



TEKLA EXPERT LEVEL for Experienced & Intermediates

- Profile Catalog Editing
- Material Catalog Editing
- Bolt Catalog Editing
- Importing attributes
- Importing custom components
- Creating basic custom component (Part and connections)
- CNC File creations
- Tekla warehouse and model sharing basics
- Various Tekla conversion formats (Exports)
- Advance settings basics
- Basic model macros
- Numbering settings
- Key board Short cuts
- Clone settings
- Creating New templates
- Graphical
- Textual
- Reports creations





Diploma in TEKLA STRUCTURES, STEEL DETAILING & MODELLING

Diploma course covers all the basics level topics and imparts the next level knowledge. Additionally, provides the basic level training in the following topics and Assignment.

- Steel Detailing Standards
- Software Tips & Tricks
- Member placement procedures
- Knowledge and Understanding of Miscellaneous items
- Clash Checking & Quality Control
- Final Assignment - Practice Project Execution & Submission (Level-2)
- Drawing Revision Control
- CNC Data Exporting
- Option settings and controlling
- Phase Manager and Controlling
- Anchor Bolt Modelling and Detailing
- Tekla BIM



PG Diploma and Advanced Training in TEKLA STRUCTURES, STEEL DETAILING & MODELLING

This course covers all the Basic & Diploma level topics. Additionally, provides the Basic / Advanced Software & Detailing training in the following topics and imparts professional level knowledge and experience.

- Environments & Industry Standards
- Advanced knowledge in Steel Detailing & Modelling
- Advanced knowledge in Profile, Bolt & Material Catalog
- Advanced Knowledge in Drawing Cloning
- Advanced knowledge in Drawing Tools and Macros
- Advanced knowledge in Export & Import
- Drawing Checking using Reports & Object Browser
- Material Takeoff & Estimation
- Shortcuts & Tools Customization
- Working with reference models
- Final Assignment - Live Project Execution & Submission
- Weld Creation and controlling in 3D Model
- Basics of Drawing Templates & Reports
- Basics of Custom Components
- Basics of Advance Option
- Firm folder Setup
- Working with Multi user mode
- Basics of Surface Treatments
- Basics of Representation
- Basics of Fabrication & Erection Sequence
- Basics of Fabrication, Transportation & Erection

Basics Level in Tekla Structures, Steel designing & Modelling

For engineers who want to understand the fundamentals of analysis within Tekla® Structural Designer. This comprehensive course will teach you how to model, analyse and design steel and concrete buildings effectively using Tekla® Structural Designer and other software. Referencing your existing knowledge, you will gain a full understanding of how to model with physical objects and undertake gravity and lateral design. In addition, you will grasp the many useful shortcuts that our experts use daily.

- Basic Design of steel structure
- Basic Design of concrete structure.
- Application of different loading on structures.

Diploma in Tekla Structures, Steel Designing & Modelling

The Diploma Training provides Tekla Structural Design Basic Trained Students with the knowledge and the tools needed to progress to the advanced stages of the Tekla Structural Designer and other programs. This class provides knowledge needed to become even more productive within your projects, customize output to suit project/client requirements. Students will undergo interactive Project during training which will simulate usage of Tekla Structural Designer in live project.

- Basic Design of steel structure
- Basic Design of concrete structure.
- Application of different loading on structures.
- Advanced design of steel and concrete structures.
- Explanation on basic design principles.
 - Application and theoretical explanation of different load cases such as Dead, Imposed, Wind, Seismic and Snow loads.
- Hands on experience in commercial and Industrial projects.

Tekla Basic Concrete

The Tekla Structures Concrete Basic Training introduces new users to the Tekla BIM (Building Information Modelling) environment and teaches them basics of RCC modelling and drawing creation. The class is relevant to RCC Detailers/Draughtsman, Concrete Contractors and engineers who are starting to use the Tekla Structures Concrete tools.

- Grid Study
- Modelling of Project and its properties.
- Connection of Project and its properties.
- Clash Checking method
- Numbering method
- Reports generation and checking
- Drawings creation and arrangement.

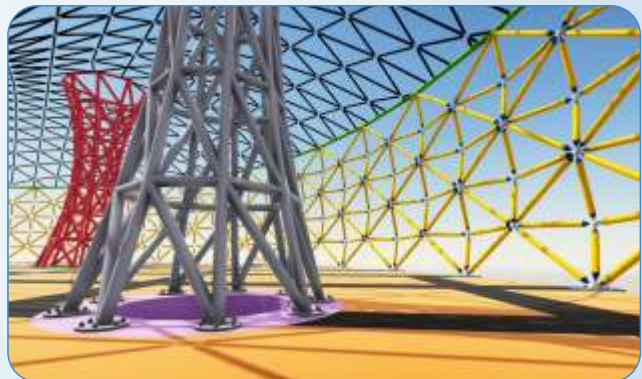
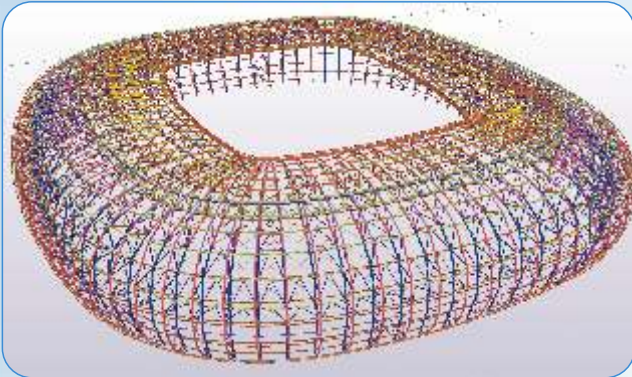
Software We Expertised

 **Tekla®**
Structures

 **Tekla®**
Structural
Designer

 **Tekla®**
Tedds

KEYWORDS DESIGN A SMART FUTURE IN STEEL STRUCTURE



Schlumberger

SANRIA

RMS
ENGINEERS

rgbsi

PROXEDGE

CIEL
ill inspired by science

paradigm

Hindustan HR
ZERO UNEMPLOYMENT

DGS
STRUCTURAL STEEL DETAILING
MECHANICAL ENGINEERING
www.dgsto.com

ICD

C CUBE
TECHNOLOGIES

AARBEE

PH

Career Aves

TREISTEK

ADVENSER

CADSTEEL
solutions

W

Whitefont
Technology Simplified


KEYWORDS
TECHNOLOGIES

Panajickal Arcade, 2nd Floor, BMRA 64
Edappaly, Kochi - 682024, Kerala

Mob : +91 9633 657 020 | 9645 221 333
info@keywordstech.in | www.keywordstech.in